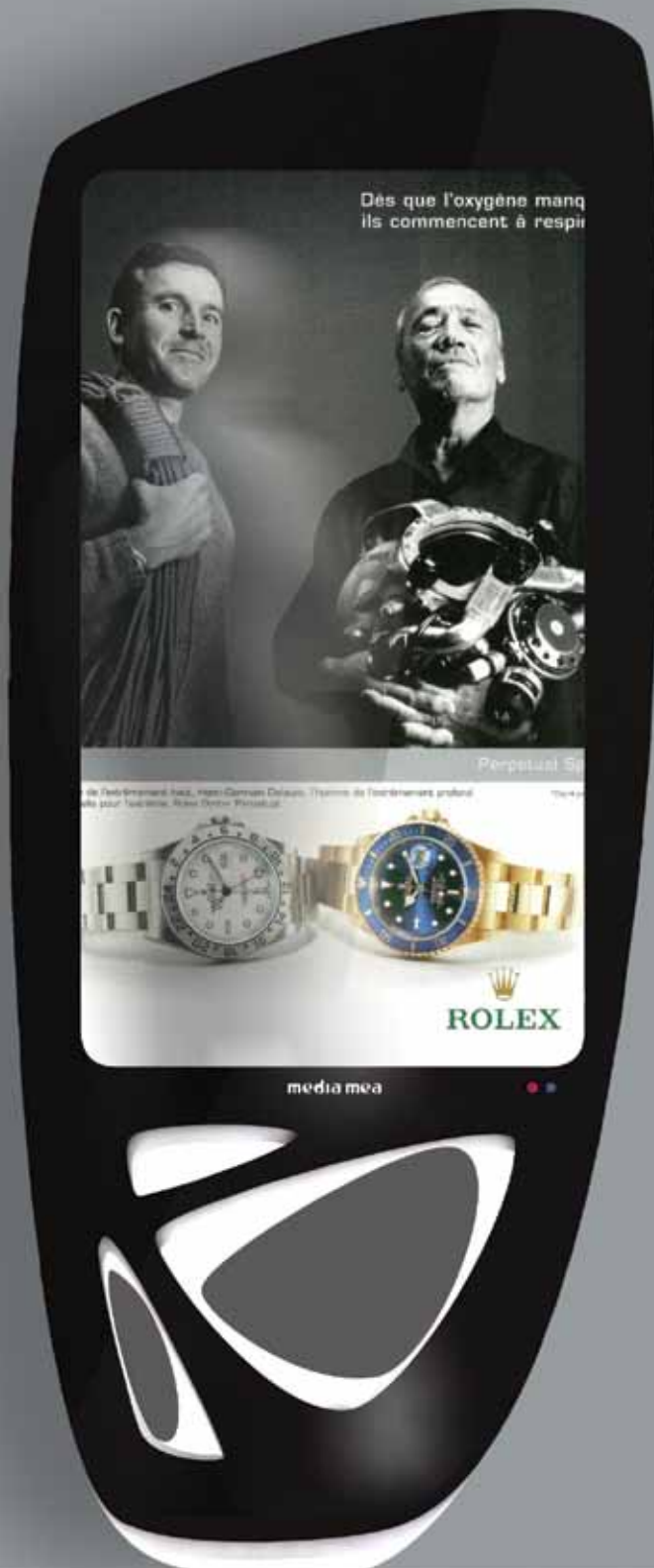


# media mea

Interactive Digital Signage Made Easy!

## MEDI Digital TOTEM



media mea

### THE BEAUTIFULLY RUGGED DIGITAL TOTEM

Beautiful things aren't always fragile. The new MEDi Digital TOTEM from media mea looks like a work of art, but has an industrial heart - designed, engineered and manufactured to handle all the bumps, knocks and spills that are part of busy public settings like malls, larger retailers, airports, campuses and convention centers.

Put a bright, full HD 47-inch interactive display totem in the middle of the action to help people look-up information, get directions and learn about promotions and offers. Sleek, minimal and stunning, the MEDi is designed by the same people who design the latest must-have smartphones.

Your MEDi totems can be custom-branded and color-keyed to your exacting specifications. With a Corning Gorilla Glass protective face, IP66 waterproofing, and rugged structural materials, MEDi Digital Totems are sturdy and built to last, and they will stay beautiful.



### KEY FEATURES

- 47-INCH HIGH-BRIGHT DISPLAY
- MULTI-TOUCH CAPACITIVE OVERLAY
- CORNING GORILLA GLASS PROTECTION
- IP66 SEALED AND LIQUID-PROOFED
- VARIABLE LED HALO EDGE LIGHTING
- ON-BOARD INTEL i5 PC

### WHERE TO USE MEDi TOTEMS

- RETAIL SHOPPING DIRECTORIES
- DIRECTORIES IN CORPORATE, CAMPUS AND HEALTHCARE
- MAPS, PLANS & IMAGES IN REAL ESTATE SALES
- NETWORKED DIGITAL AD POSTERS

### SPECIFICATIONS

- **Panel size:** 47" TFT-LCD, LED backlight
- **Display area(mm)/mode:** 1040\*585 mm
- **Maximum resolution:** 1920x1080
- **Display color:** 16.7M
- **Pixel Pitch(mm):** 0.54mm
- **Brightness (nits):** 700cd/m<sup>2</sup>
- **Contrast:** 3000:1
- **Visual angle:** 178°/178°
- **Response time:** 5ms
- **Horizontal frequency:** 30-75KHZ
- **Vertical frequency:** 56-75KHZ
- **Life(hrs):** 60,000(hrs)

### Input and output

- **Composite video input:** 1
- **VGA:** 1
- **HDMI:** 1
- **Composite video output:** 1

### Video

- **Color system:** PAL/NTSC/SECAM
- **Compatible HDMI input:** 480P, 576P, 720P, 1080I, 1080P
- **3D Comb filter:** Yes
- **Video reduction noise:** Yes

### OSD display (Screen Menu Display)

- **Menu language:** English

### Power

- **Power supply:** AC100V~240V, 50/60Hz
- **Maximum power consumption:** ≤150W
- **Standby power consumption:** 3W

### Temperature

- **Working temperature:** 0~50°C
- **Storage temperature:** -20°C~60°C
- **Working humidity:** 10%~90%
- **Storage humidity:** 5%~95%

### Appearance

- **Panel color/appearance:** White, black or customized
- **Case Material:** Metal & Acrylic
- **Installation:** Floor-standing

**media mea**

3333 Piedmont Rd. NE  
Atlanta, GA 30305 - USA

**Phone:** +1 (404) 400-2088

**Fax:** +1 (404) 400-2211

**E-Mail:** [info@mediamea.com](mailto:info@mediamea.com)

**Website:** [www.mediamea.com](http://www.mediamea.com)